



T: Domestic 0477 447 349

T: International +61 477 477 349

Steam Powered Garden Railways



## PRODUCT SHEET

ROUNDHOUSE ENG. CO (UK)

### Peggie



Saddle tanks were probably the most common type of small locomotive found on British narrow gauge railways and Peggie is typical of the style. Personalise it to your own requirements with the additional parts and accessories available. A coal bunker is now available for Peggie and Bertie locos as an additional enhancement..

### Specifications

- 0-4-0 inside framed chassis with double acting slide valve cylinders operated by slip eccentric valve gear.
- Internal gas firing using the ROUNDHOUSE 'FG' gas system.
- Controls fitted as standard are:- steam regulator, safety valve, displacement lubricator and gas regulator.
- Dimensions (loading gauge) are:- length 270mm over buffers, width 118mm, height 145mm, weight 2.1Kg.
- 32mm or 45mm gauge (non-adjustable) please state when ordering.
- A gas filling adaptor is required.
- Minimum radius 2'.
- Optional extras, see below and our [Loco Enhancements](#) page for further details.
- Available in any [Standard Roundhouse Colour](#)



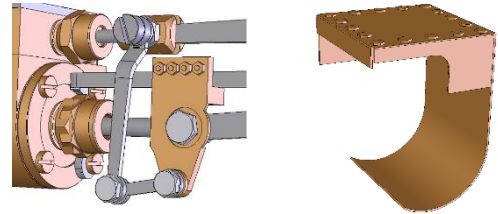
T: Domestic 0477 447 349

T: International +61 477 477 349

Steam Powered Garden Railways

## Options & Enhancements available for Peggie

- Basic Series R/C conversion kit
- Coal Bunker
- Slide Bar / Combination Lever set
- Cylinder Covers



Peggie with optional coal bunker, cylinder covers & slide bar / combination lever set

Information and images of the model are courtesy of Roundhouse. Specifications subject to change without notice.